









# Mt. Riga Forest Harvest Areas (1981-2016)

Northeast, New York & Salisbury, Connecticut

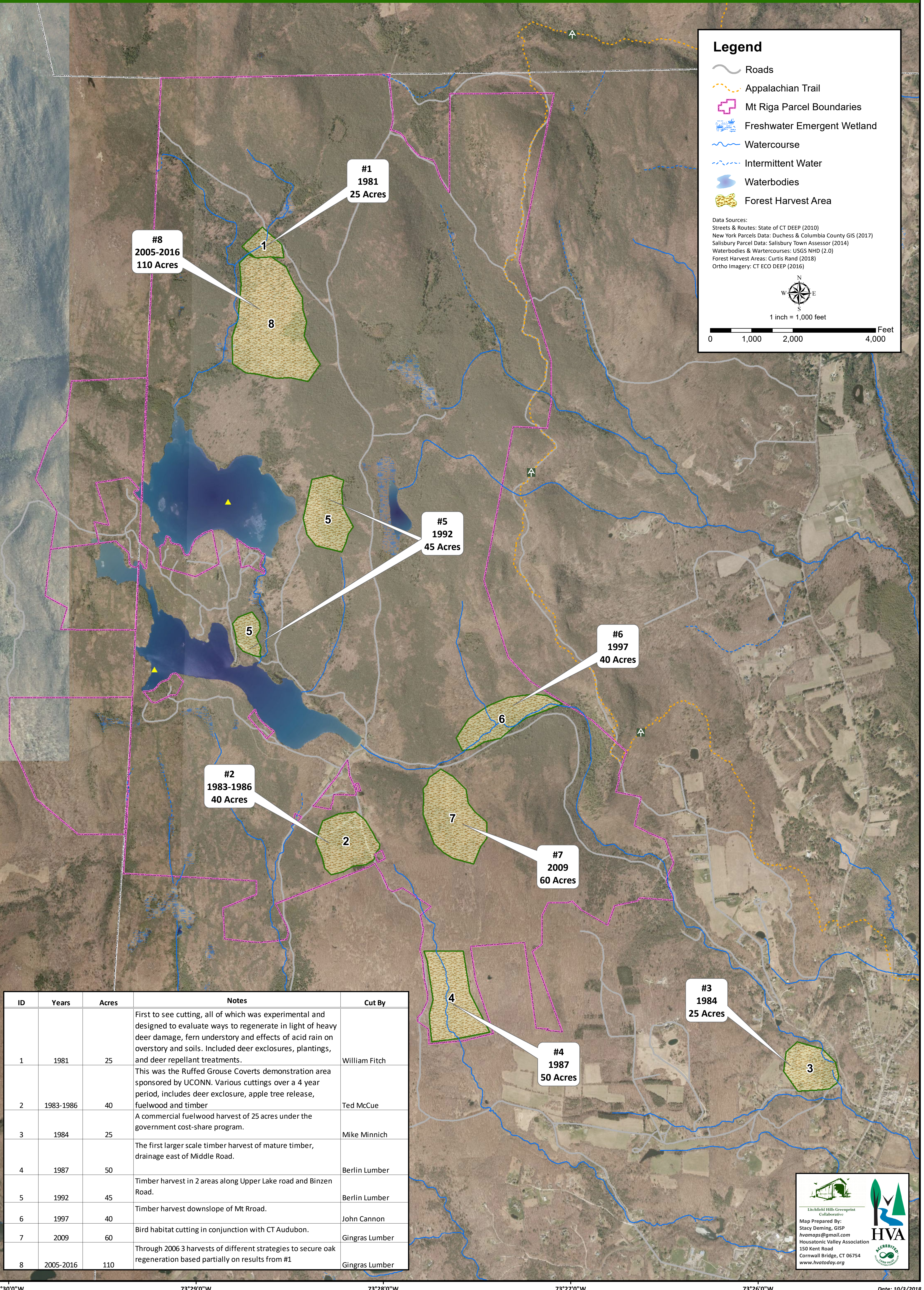
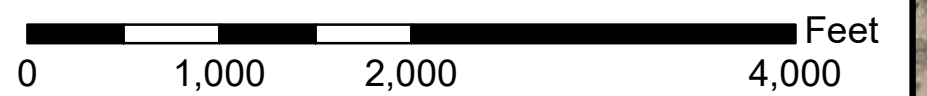
## Legend

-  Roads
-  Appalachian Trail
-  Mt Riga Parcel Boundaries
-  Freshwater Emergent Wetland
-  Watercourse
-  Intermittent Water
-  Waterbodies
-  Forest Harvest Area

Data Sources:  
 Streets & Routes: State of CT DEEP (2010)  
 New York Parcels Data: Dutchess & Columbia County GIS (2017)  
 Salisbury Parcel Data: Salisbury Town Assessor (2014)  
 Waterbodies & Watercourses: USGS NHD (2.0)  
 Forest Harvest Areas: Curtis Rand (2018)  
 Ortho Imagery: CT ECO DEEP (2016)



1 inch = 1,000 feet



ID	Years	Acres	Notes	Cut By
1	1981	25	First to see cutting, all of which was experimental and designed to evaluate ways to regenerate in light of heavy deer damage, fern understory and effects of acid rain on overstory and soils. Included deer exclosures, plantings, and deer repellent treatments.	William Fitch
2	1983-1986	40	This was the Ruffed Grouse Coverts demonstration area sponsored by UCONN. Various cuttings over a 4 year period, includes deer exclosure, apple tree release, fuelwood and timber	Ted McCue
3	1984	25	A commercial fuelwood harvest of 25 acres under the government cost-share program.	Mike Minnich
4	1987	50	The first larger scale timber harvest of mature timber, drainage east of Middle Road.	Berlin Lumber
5	1992	45	Timber harvest in 2 areas along Upper Lake road and Binzen Road.	Berlin Lumber
6	1997	40	Timber harvest downslope of Mt Rroad.	John Cannon
7	2009	60	Bird habitat cutting in conjunction with CT Audubon.	Gingras Lumber
8	2005-2016	110	Through 2006 3 harvests of different strategies to secure oak regeneration based partially on results from #1	Gingras Lumber

Map Prepared By:  
 Stacy Deming, GISP  
 hvamaps@gmail.com  
 Housatonic Valley Association  
 150 Kent Road  
 Cornwall Bridge, CT 06754  
 www.hvatoday.org